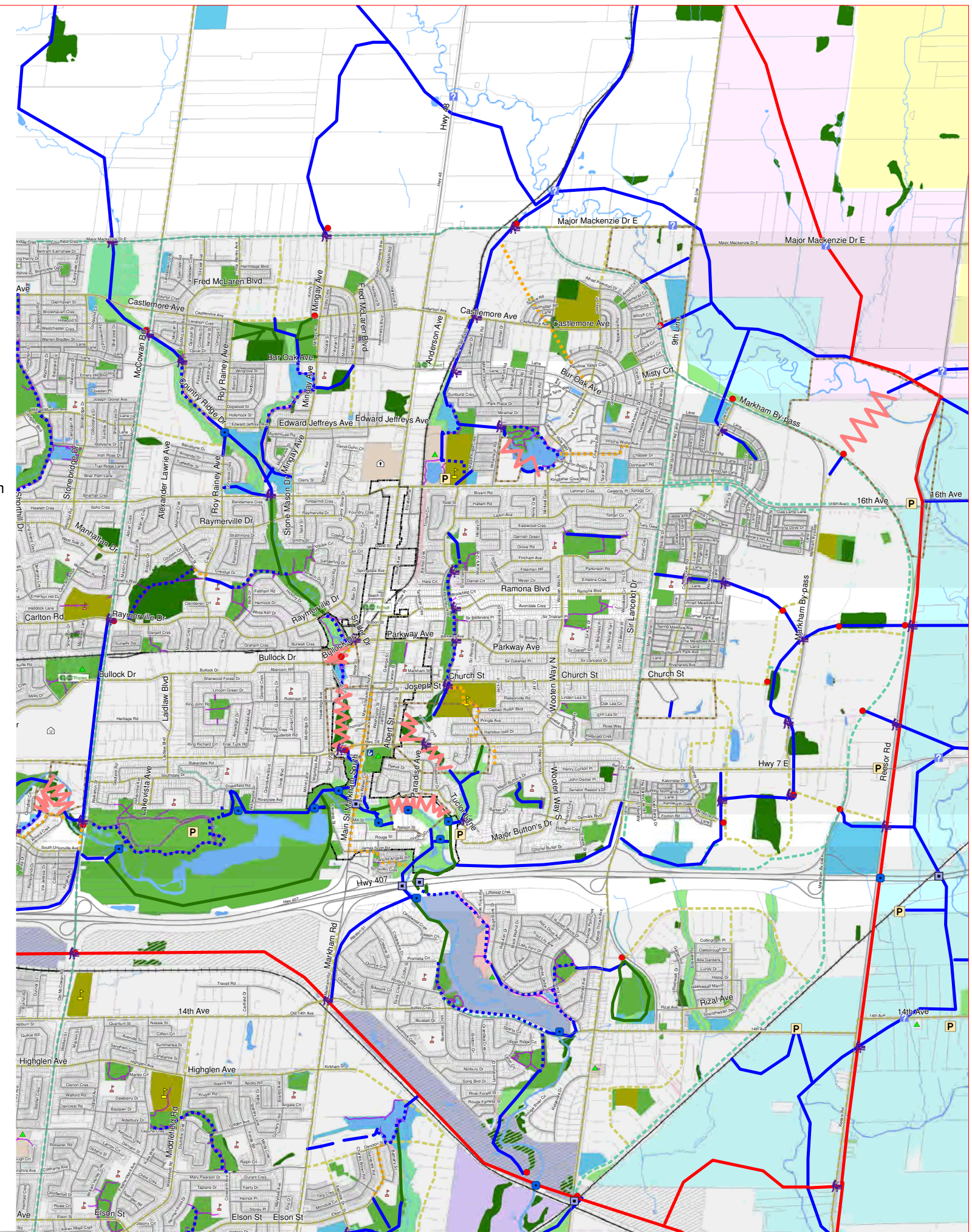
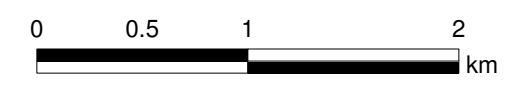
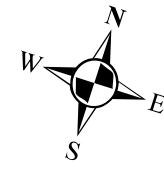


MAP 9 Pathway and Trails Master Plan MARKHAM EAST

- Facility Types and Network Elements**
- TYPE 1 - PRIMARY MULTI-USE TOWN WIDE PATHWAY
 - TYPE 1 - ON EXISTING TRAILS
 - TYPE 2 - SECONDARY TOWN WIDE PATHWAY
 - TYPE 2 - ON EXISTING
 - TYPE 4 - TRAILS
 - BARRIERS
 - ALTERNATE ROUTES
 - PARTNERSHIP ZONES
 - EXISTING / PROPOSED ON ROAD CYCLING ROUTES
 - OFF ROAD BOULEVARD TRAILS
 - EXISTING TRAILS
 - PROPOSED TRAIL HEAD
 - EXISTING TRAIL UNDER BRIDGE
 - AT GRADE CROSSING
 - PROPOSED TRAIL UNDER EXISTING BRIDGE
 - PROPOSED UNDERPASS
 - PROPOSED BRIDGE CROSSING
 - CROSSING TO BE DETERMINED BASED ON FUTURE ROAD PLANS / UNKNOWN



- Legend**
- Railway
 - Roads
 - Proposed Future Roads
 - Park
 - Open Space
 - Woodlot
 - Storm Water Management Facility
 - School
 - Buffer
 - Town Facilities
 - Golf Course - Public
 - Golf Course - Private
 - Heritage Districts
 - Federal Airport Land
 - Federal Open Space
 - Rouge Park
 - Hydro Corridor
 - On Road/ Off Road Access Points
 - Gateway to Other Regional Trails & Pathways
 - Potential Connections to Other Regional Trails & Pathways
 - GO Station

M:\Jobs\2023\14.05126.01.LAT - Markham Trail Study\maping\GIS\map\fig_09_bike_easter.mxd