



# Wet Venting

The Building Standards Department issues Builder Tips as part of our customer service program. They are designed to provide an improved understanding of the Building Code and to reduce the costs associated with correcting infractions. Please contact your area building inspector for further information or call the Building Standards Department at 905.475.4848 extension 2189

## 7.5.2.1. Wet Venting

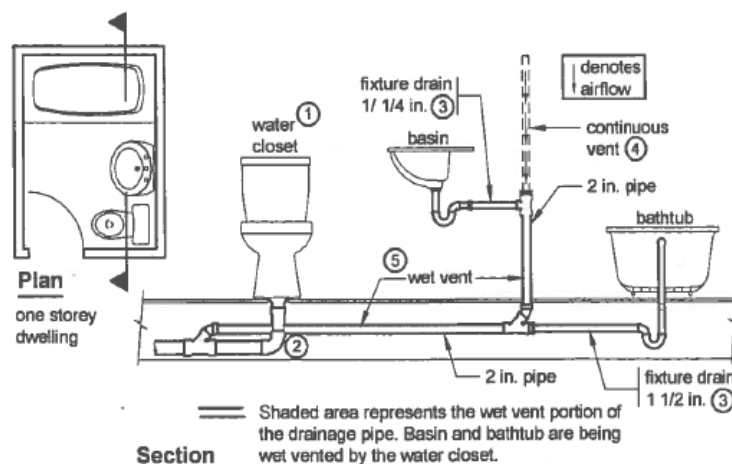
- (1) A sanitary drainage pipe is permitted to serve as a wet vent, provided
  - (a) The hydraulic load is in accordance with Table 7.5.8.1.,
  - (b) The number of wet vented water closets does not exceed two,
  - (c) When two water closets are installed, they are connected at the same level by means of a double sanitary T fitting if the vent pipe is vertical and by means of a double Y fitting if the vent is horizontal,
  - (d) The water closets are installed downstream of all other fixtures,
  - (e) Trap arms and fixtures drains connected to the wet vent do not exceed NPS 2, except for connections from emergency floor drains in accordance with Sentence 7.5.1.1. (3),
  - (f) The total hydraulic load on the wet vent does not exceed the limits stated in Table 7.5.8.1. when separately vented branches or fixture drains in the same storey, having a total hydraulic load not greater than two fixture units, are connected to a wet vent or a wet vented water closet trap arm,
  - (g) The hydraulic load of separately vented fixtures that drain into the wet vent is not included when sizing the continuous vent that serves the wet vent,
  - (h) Where a wet vent extends through more than 1 storey, the total discharge from any 1 storey above the first storey does not exceed four fixture units,
  - (i) There is not more than one nominally horizontal offset in the wet vent, and
    - (i) The offset does not exceed 1.2 m for pipes of NPS 2 or less in size, or
    - (ii) The offset does not exceed 2.5 m for pipes larger than NPS 2,
  - (j) The wet vented portion is not reduced in size except for the portion that is upstream of floor drains in accordance with Clauses 7.5.1.1.(3),

(k) The length of the wet vent is not limited.

## OBJECTIVE

Soil or waste pipes may serve as wet vents in plumbing systems under specific Code requirements. Wet vents are expected to accommodate the expected hydraulic loads from the fixtures and provide adequate source of air supply from the exterior to allow the waste to drain.

When site conditions require having a horizontal continuation of the vertical vent and other fixtures are connected directly and independently, it is extremely important that the uppermost fixture is connected to the vertical portion of the vent. This may help avoid clogging of the system and assist flushing.



- ① The number of wet vented water closets does not exceed 2.
- ② The water closet(s) are installed down stream of all other fixtures.
- ③ Trap arms and fixture drains connected to the wet vent do not exceed 2 in. in size.
- ④ The hydraulic load to be considered when sizing a continuous vent that serves a wet vent, only includes the hydraulic load that is wet vented. In the example it would be the hydraulic load from the basin and bathtub.
- ⑤ The wet vented portion is not reduced in size and the length of the vent is not limited.
- ⑥ The highest fixture (basin) is connected to a vertical portion of the wet vent, upstream of any other fixture in the form of a continuous vent.