



Size And Capacity Of Water Service For A House With One Dwelling Unit

The Building Standards Department issues Builder Tips as part of our customer service program. They are designed to provide an improved understanding of the Building Code and to reduce the costs associated with correcting infractions. Please contact your area building inspector for further information or call the Building Standards Department at 905.475.4848 extension 2189

7.6.3.4. Size

(6) Where both hot and cold water is supplied to fixtures in a house containing only one dwelling unit, the water service pipe is permitted to be a minimum of NPS ¾ in. provided

(a) a minimum of NPS ¾ in. water supply piping located in the basement or lower level is extended to the base of every hot and cold riser that serves a maximum of one bathroom group and to the last water supply branch serving any basement bathroom group, fixture supply or hose bibb, and

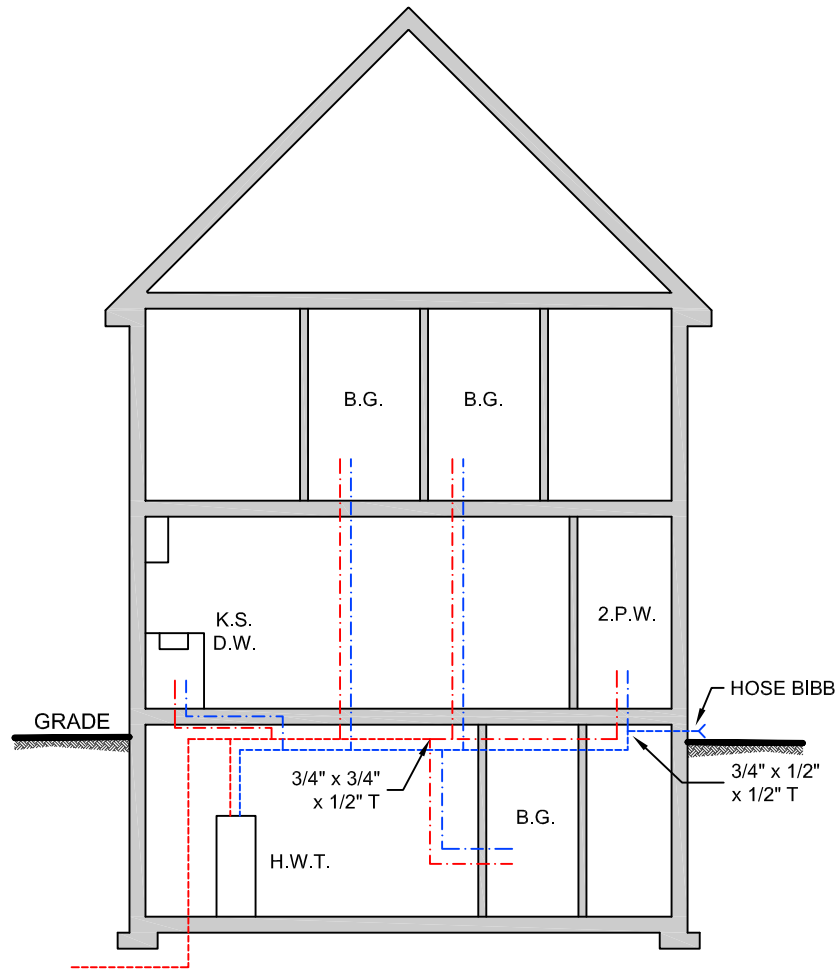
(b) the total hydraulic load is not more than 26 fixture units, using the values given in Table 7.6.3.2.-A.

OBJECTIVE

Recent amendments to the Building Code were made as the previous Building Code requirements could potentially be interpreted to cause installation of larger water supply piping than what has historically been required. This could cause issues with over-use of water and resident d periods for hot water.

As an example, the dia containing (one dwellin Second floor – 2 bathro fixture units each = 7.2 washroom with water c 0.7, 1.4, and 1.4 fixture bathroom group and 2 8.6 fixture units. Total fixture units = 7.2

allowing fixture units for a house he requirements for a ¾” water service. lavatory, and bath or shower @ 3.6 kitchen sink, dishwasher, 2 piece tub and clothes water @ 1.4, 1.4, 2.2, 8.6 fixture units Basement – 1 each fixture units respectively, total =



LEGEND

	1/2" HOT WATER LINE
	3/4" HOT WATER LINE
	1/2" COLD WATER LINE
	3/4" COLD WATER LINE
B.G.	BATHROOM GROUP
2.P.W.	2 PIECE WASHROOM
K.S.	KITCHEN SINK
D.W.	DISHWASHER
H.W.T.	HOT WATER TANK

NOTE: ALL SIZES ARE MINIMUM