

ONTARIO BUILDING CODE

3.8. Barrier Free Design

3.8.1.1. Application

- (1) The requirements of this section apply to all buildings except,
- (a) Houses, including semi-detached houses, duplexes, triplexes, town houses and boarding or rooming houses with fewer than 8 boarders or roomers,
 - (b) Buildings of group F, Division 1 major occupancy,
 - (c) Buildings that are not intended to be occupied on a daily or full time basis, including automatic telephone exchanges, pump houses and substations, and
 - (d) Camps for housing of workers.

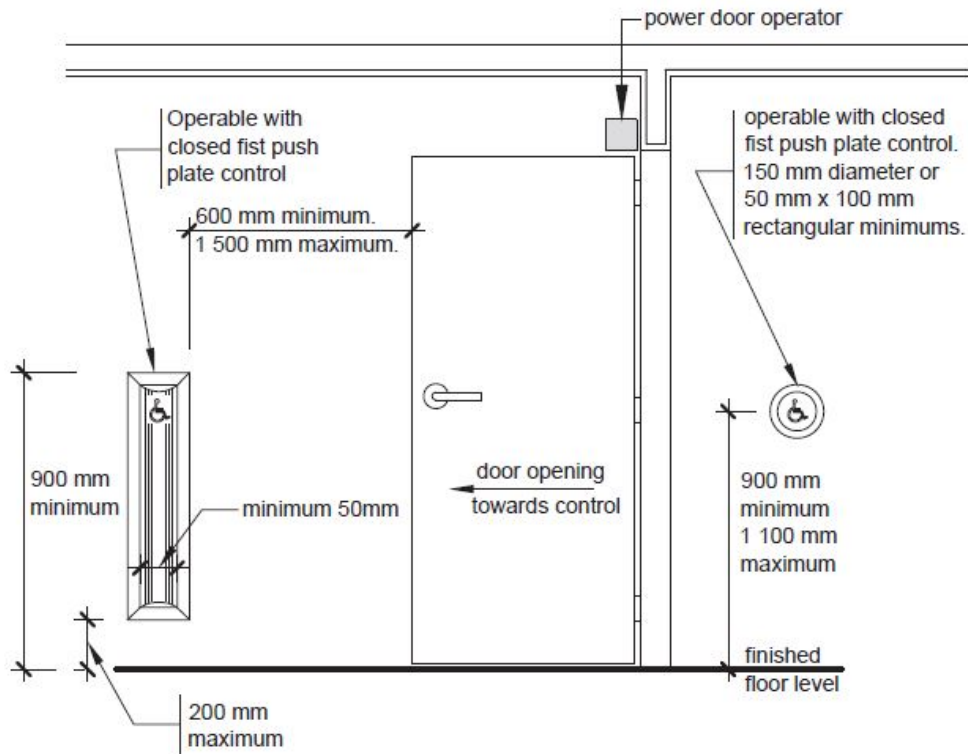
OBJECTIVE

Section 3.8 contains minimum provisions to accommodate a person using a manual wheelchair or other manual mobility assistance devices such as walking aids. The Building Code also includes provisions to address needs of people with sensory disabilities.

The following Building Code Articles contain provisions that relate to the location and installation of required power door operators.

- 3.8.1.2. Entrances
- 3.8.2.4. Hotels
- 3.8.3.3. Doorways and Doors
- 3.8.3.12. Universal Washrooms

This Builder Tip has summarized the power door operator location requirements required by the Building Code. Additionally the diagram on the next page provides the installation requirements for power door operators.



Elevation

Power Door Operator Installation Requirements

The Building Standards Department issues BUILDER TIPS as part of our customer service program. They are designed to provide an improved understanding of the Building Code and to reduce the costs associated with correcting infractions. Please contact your area building inspector for further information or call the Building Standards Department at (905) 475-4850

Builder Tip

LOCATION OF REQUIRED POWER DOOR OPERATORS IN A BUILDING

Building Location	Conditions for Requirement	Code Reference
Entrance to Building ⁽¹⁾	Every door that provides a barrier-free path of travel through a barrier-free entrance required by Article 3.8.1.2. shall be equipped with a power door operator if the entrance serves a building containing a Group A, Group B, Division 2 or 3, Group C, Group D or Group E occupancy.	3.8.3.3.(4)
Universal Washroom	Door equipped with a power door operator if the door is equipped with a self-closing device,	3.8.3.12.(1)(i)
<i>Public Use</i> Washroom ⁽²⁾	Door serves a washroom for <i>public use</i> that is required to be barrier-free ⁽²⁾	3.8.3.3.(6)(a)
Hotel Suite	Entrance door to a suite required to have a barrier-free path of travel (10% of suites in a hotel to maximum 20 suites)	3.8.2.4.(5)
Vestibule Door ⁽¹⁾	Where a barrier-free entrance required by Article 3.8.1.2. incorporates a vestibule, a door leading from the vestibule into the floor area shall be equipped with a power door operator in a building containing a Group A, Group B, Division 2 or 3, Group C, Group D or Group E occupancy.	3.8.3.3.(5)
Group A Occupancy	Each door that serves a Group A occupancy within a Group C major occupancy apartment building.	3.8.3.3.(6)(b)
Universal Washroom	Door serves a universal washroom that is for <i>public use</i> ⁽²⁾	3.8.3.3.(6)(a)
Barrier-free Path of Travel	Where the clear space on the latch side of the door is; <ul style="list-style-type: none"> • Less than 600 mm beyond the edge of the door opening if the door swings toward the approach side, • Less than 300 mm beyond the edge of the door opening if the door swings away from the approach side, and • Less than 300 mm beyond both sides of a sliding door (Please note that if the above requirements are not achievable a power door operator is required.)	3.8.3.3.(10)

Notes to Table

- (1) 3.8.3.3.(12) Only the active leaf in a multiple leaf door in a barrier-free path of travel need conform to the requirements of this Article.
- (2) *Public Use* means, when applied to plumbing fixtures, fixtures in general washrooms of schools, gymnasiums, hotels, bars, public comfort stations and other installations in which fixtures are installed so that their use is unrestricted.