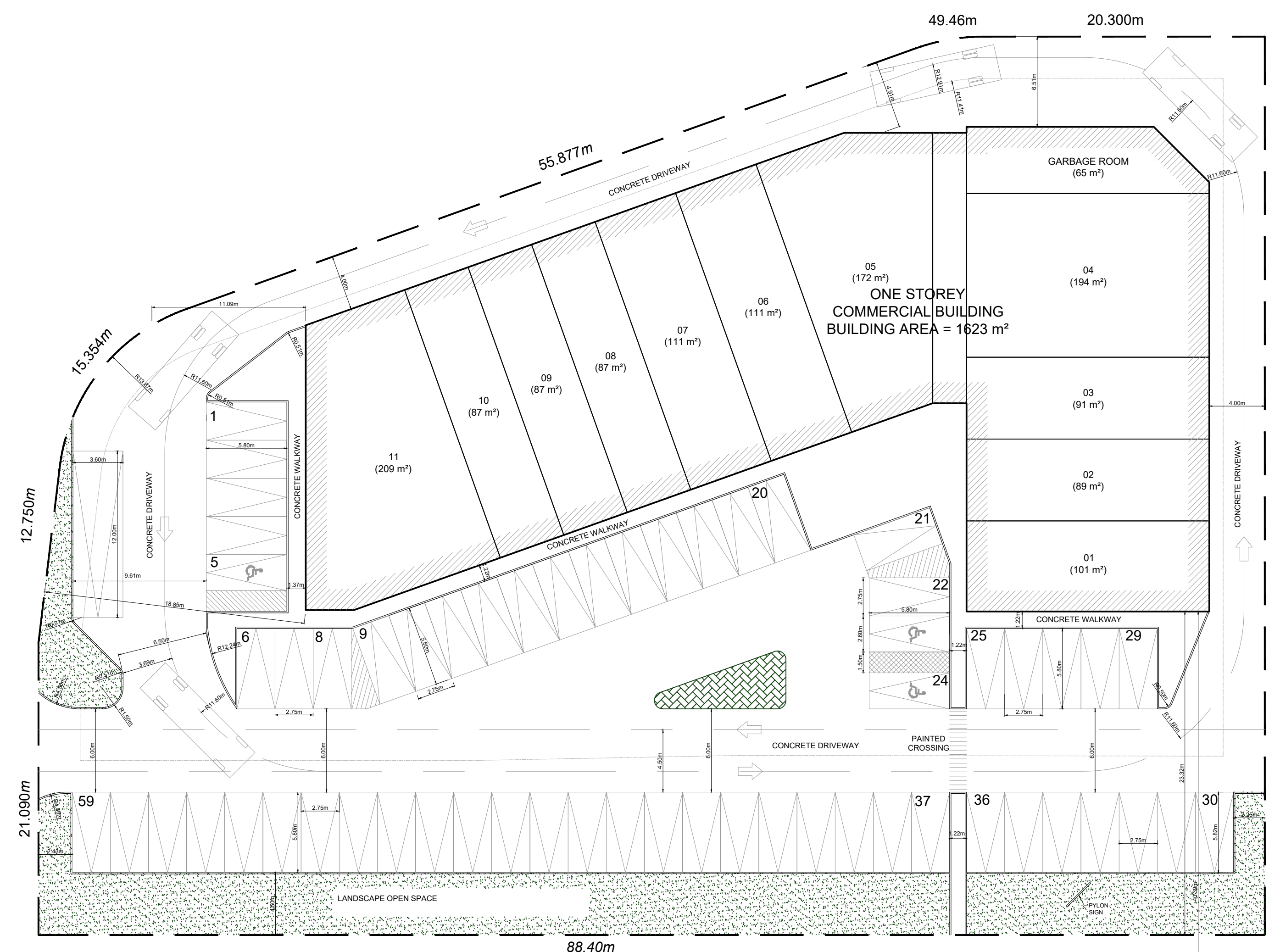
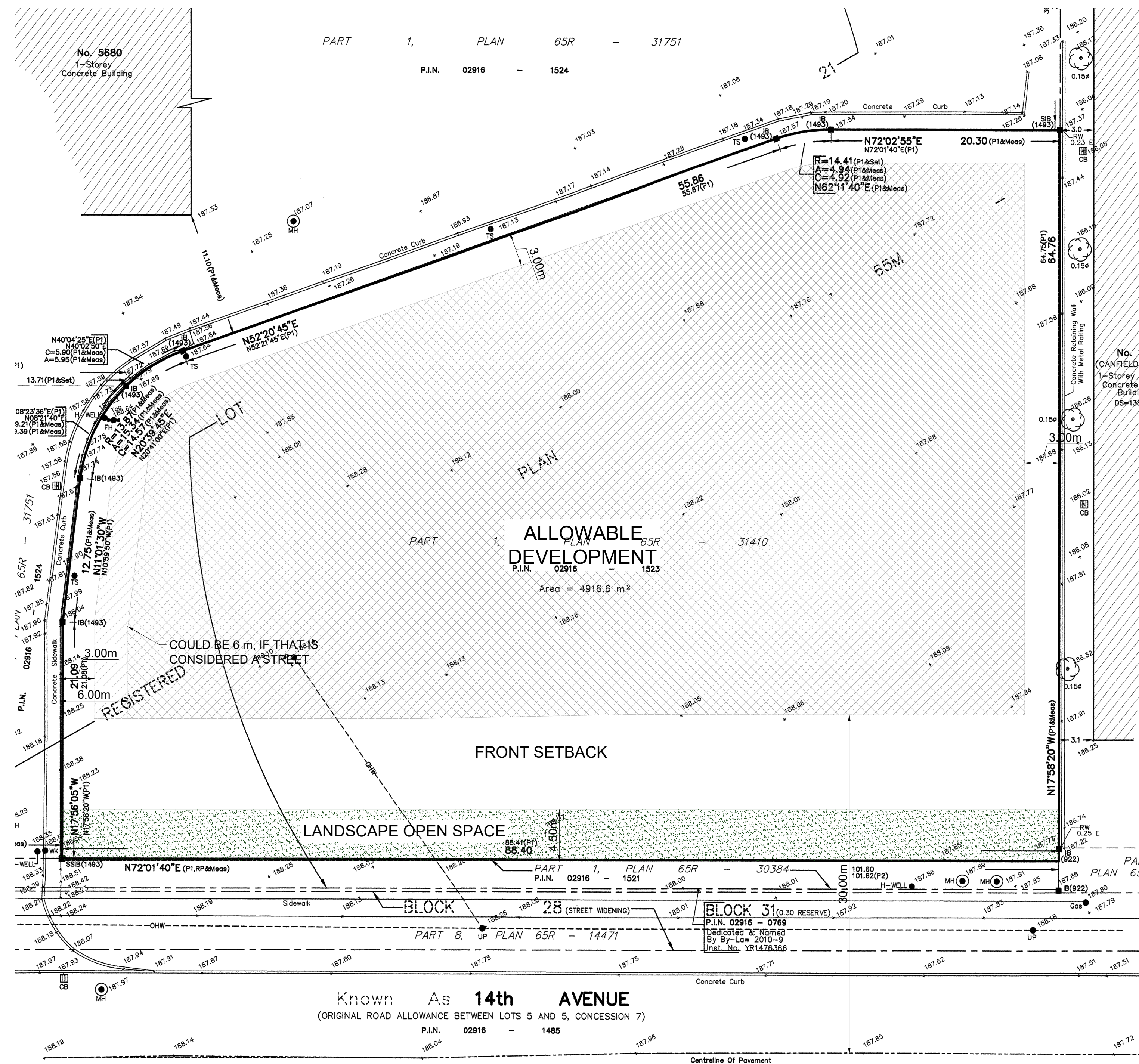


SITE STATISTICS

LOT AREA = 4917.12 m²
 BUILDING AREA = 1623 m²
 LOT FRONTAGE = 88.40 m
 ALLOWED FAR = 2212.70 m² (45%)
 PROPOSED FAR = 1447 m² (29%)
 LANDSCAPED AREA = 469.39 m²
 NUMBER OF STOREYS = 1
 MAX. BUILDING HEIGHT = 14 m
 PROPOSED BUILDING HEIGHT = 7.3 m

SETBACKS = • 3 m ADJOINING LOT LINE
 • 30 m FROM CENTRELINE OF 14TH AVENUE
 WHEN USED FOR LANDSCAPE OPEN SPACE

**DRAFT
 IN PROGRESS**



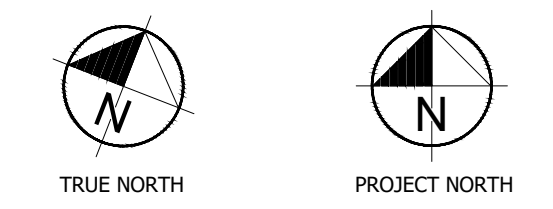
Revision	Date
REV. 01 FOR ZPR	DEC 06, 2023
ISSUED FOR ZPR	NOV 15, 2023



**MIXED USE
 DEVELOPMENT**
 5690 14TH AVENUE
 MARKHAM, ONTARIO
 L3S 3K5

SITE STATISTICS

ALL DRAWINGS, SPECIFICATIONS, RELATED DOCUMENTS AND DESIGNS ARE THE PROPERTY OF PYLONS ARCHITECTURE INC. AND MUST BE RETURNED UPON REQUEST. REPRODUCTION OF THE DRAWINGS, SPECIFICATIONS, RELATED DOCUMENTS AND DESIGNS IN WHOLE OR IN PART IS STRICTLY FORBIDDEN WITHOUT PRIOR WRITTEN PERMISSION. VERIFY ALL DIMENSIONS AND CONDITIONS ON SITE AND REPORT ALL VARIATIONS TO THE ARCHITECT BEFORE PROCEEDING WITH THE WORK. DRAWINGS NOT TO BE SCALED.



Project No.: 23PA13
 Scale: AS NOTED
 Date: MAR 10, 2023
 Drawn by: AS/RN
 Checked by: RN

A0.02

01 allowable development
 SCALE | 1:250

02 proposed development
 SCALE | 1:250

file: C:\Users\racon\OneDrive - Pylons Architecture Inc\Projects\23-PA13 - 5690 14th Ave\3-Cons Dwg\3-ZPR1.dwg, plotted: 1/22/2024 1:26 PM



01 exterior render
SCALE | NTS



02 exterior render
SCALE | NTS

**DRAFT
IN PROGRESS**

Revision	Date
REV. 01 FOR ZPR	DEC 06, 2023
ISSUED FOR ZPR	NOV 15, 2023

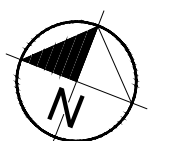
P PYLONS
architecture inc.
Architecture • Interior Design • Project Management
T | 289-637-1375 E | info@pylonsai.ca W | www.pylonsai.ca
A | 20 Rivermede Road, Unit# 101, Concord, Ontario, Canada



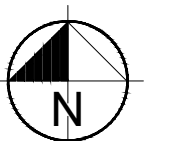
**MIXED USE
DEVELOPMENT**
5690 14TH AVENUE
MARKHAM, ONTARIO
L3S 3K5

EXTERIOR RENDERS

ALL DRAWINGS, SPECIFICATIONS, RELATED DOCUMENTS AND DESIGNS ARE THE PROPERTY OF PYLONS ARCHITECTURE INC. AND MUST BE RETURNED UPON REQUEST. REPRODUCTION OF THE DRAWINGS, SPECIFICATIONS, RELATED DOCUMENTS AND DESIGNS IN WHOLE OR IN PART IS STRICTLY FORBIDDEN WITHOUT PRIOR WRITTEN PERMISSION. VERIFY ALL DIMENSIONS AND CONDITIONS ON SITE AND REPORT ALL VARIATIONS TO THE ARCHITECT BEFORE PROCEEDING WITH THE WORK. DRAWINGS NOT TO BE SCALED.



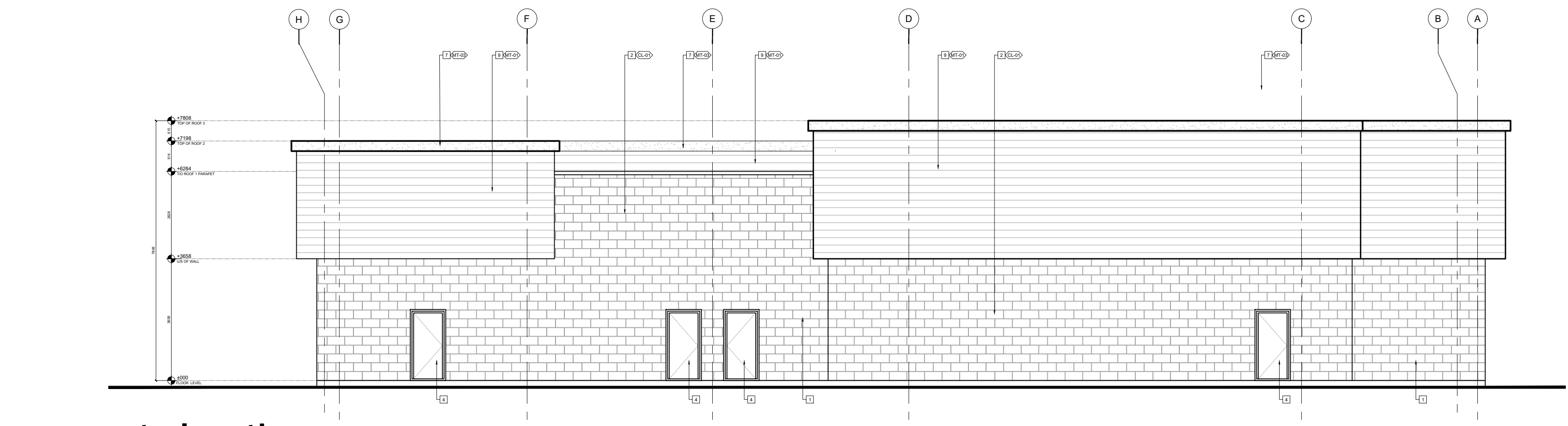
TRUE NORTH



PROJECT NORTH

Project No.: 23PA00
Scale: AS NOTED
Date: DEC 21, 2023
Drawn by: RA
Checked by: RA

A3.00



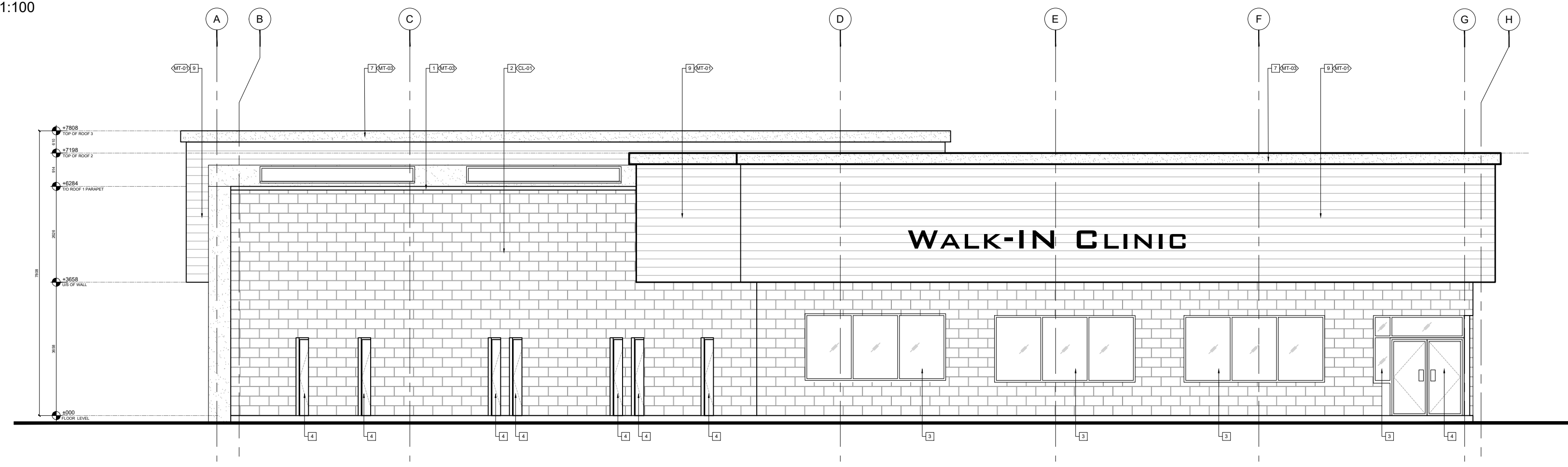
04 east elevation
SCALE | 1:100

EXTERIOR ELEVATIONS/ BUILDING SECTIONS NOTES

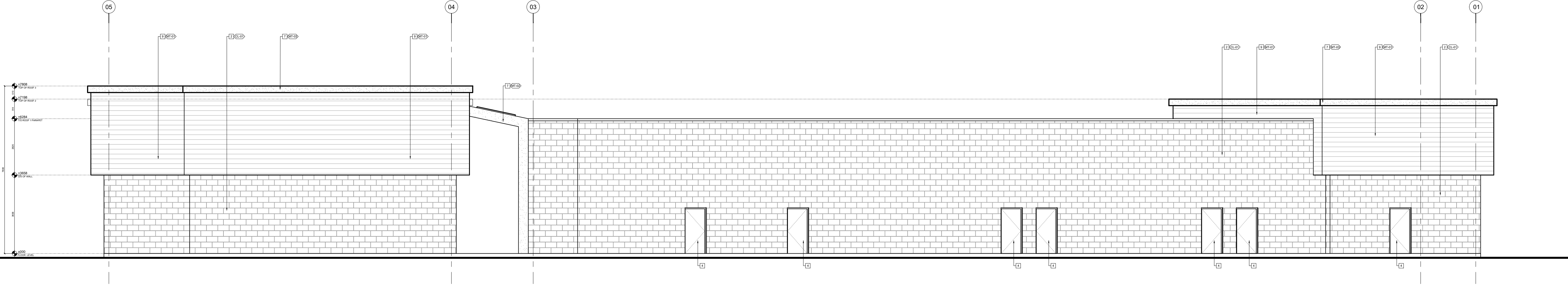
- 1 PASSAGEWAY CANOPY. REFER TO FINISHING SCHEDULE FOR DETAILS.
- 2 MANUFACTURED STONE CLADDING. REFER TO FINISHING SCHEDULE & SPECS FOR DETAILS.
- 3 PRE-FINISHED ALUMINUM WINDOW. REFER TO WINDOW & FINISHING SCHEDULE FOR DETAILS.
- 4 PRE-FINISHED ALUMINUM DOOR. REFER TO DOOR & FINISHING SCHEDULE FOR DETAILS.
- 5 PAINTED METAL DOOR. REFER TO DOOR & FINISHING SCHEDULE FOR DETAILS.
- 6 METAL CANOPY. REFER TO SPECS AND FINISH SCHEDULE FOR DETAILS.
- 7 ROOF FASCIA. REFER TO FINISHING SCHEDULE AND SPECS FOR DETAILS.
- 8 PRE-FINISHED METAL FLASHING. REFER TO FINISHING SCHEDULE & SPECS FOR DETAILS.
- 9 EXTERIOR CLADDING. REFER TO FINISHING SCHEDULE & SPECS FOR DETAILS.

FINISH SCHEDULE LEGEND

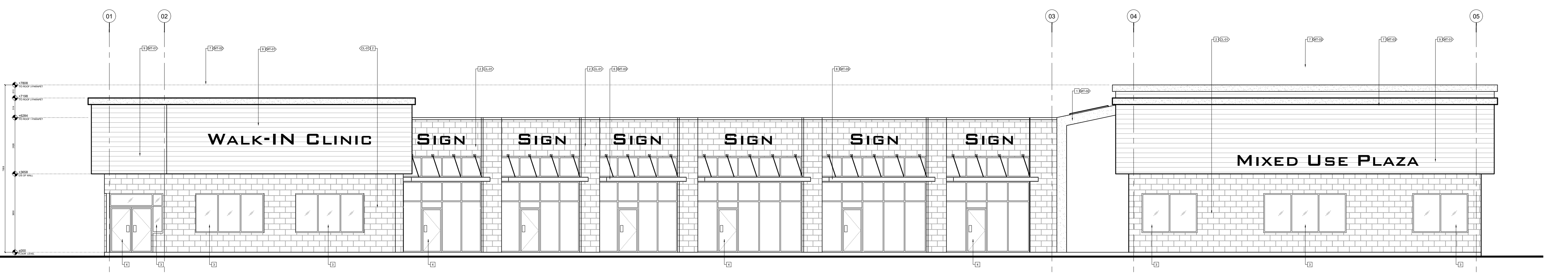
FINISH SYM.	PRODUCT	MANUFACTURER	TYPE, SIZE & COLOUR	ALTERNATIVE MANUFACTURER/S	NOTES
MT-01	STEEL SIDING	VICWEST BUILDING PRODUCTS	BELLARA SIGNATURE MATTE SIZE: TBD COLOUR: GRAPHITE		
MT-02	ALUMINUM PANELS	ALPOLIC METAL COMPOSITE MATERIALS	ANODIZED ALUMINUM PANELS SIZE: TBD COLOUR: BLACK		
MT-03	METAL CLADDING	TBD	TBD SIZE: TBD COLOUR: MATCH ALPOLIC PANELS		
CL-01	MANUFACTURED STONE VENEER	BRAMPTON BRICK	BONNEVILLE SIZE: 90 x 290 x 590 COLOUR: DOVER		



03 west elevation
SCALE | 1:100



02 north elevation
SCALE | 1:100



01 south elevation
SCALE | 1:100

**DRAFT
IN PROGRESS**

Revision	Date
REV. 01 FOR ZPR	DEC 06, 2023
ISSUED FOR ZPR	NOV 15, 2023

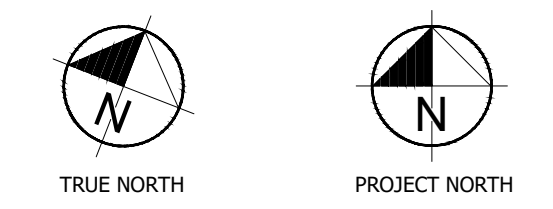
PYLON'S
architecture inc.
Architecture • Interior Design • Project Management
T | 289-637-1375 E | info@pylons.ca W | www.pylons.ca
A | 20 Rivermeade Road, Unit# 101, Concord, Ontario, Canada



**MIXED USE
DEVELOPMENT**
5690 14TH AVENUE
MARKHAM, ONTARIO
L3S 3K5

EXTERIOR ELEVATIONS

ALL DRAWINGS, SPECIFICATIONS, RELATED DOCUMENTS AND DESIGNS ARE THE PROPERTY OF PYLONS ARCHITECTURE INC. AND MUST BE RETURNED UPON REQUEST. REPRODUCTION OF THE DRAWINGS, SPECIFICATIONS, RELATED DOCUMENTS AND DESIGNS IN WHOLE OR IN PART IS STRICTLY FORBIDDEN WITHOUT PRIOR WRITTEN PERMISSION. VERIFY ALL DIMENSIONS AND CONDITIONS ON SITE AND REPORT ALL VARIATIONS TO THE ARCHITECT BEFORE PROCEEDING WITH THE WORK. DRAWINGS NOT TO BE SCALED.



Project No.: 23-PA00
Scale: AS NOTED
Date: DEC 21, 2023
Drawn by: RA
Checked by: RA

A4.00