



This map is subject to appeals to the Local Planning Appeal Tribunal. The numbered boxes depict lands owned by appellants of this map. The scope of any issues raised in those appellants' appeals will be identified as part of Local Planning Appeal Tribunal Case No. PL140743

LPAT File Number PL140743 - April 9, 2018 Office Consolidation

OFFICIAL PLAN

Map 11 - Minor Collector Road Network is subject to Appeal Nos. 2. (Issue 53)
20. (Issue 264)

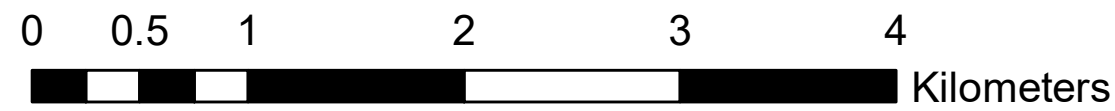
MAP 11 - MINOR COLLECTOR ROAD NETWORK

as modified and approved by York Region June 12/14
JUNE 2014

2 Berczy Glen Landowners Group Inc.

20 IBM Canada Ltd.

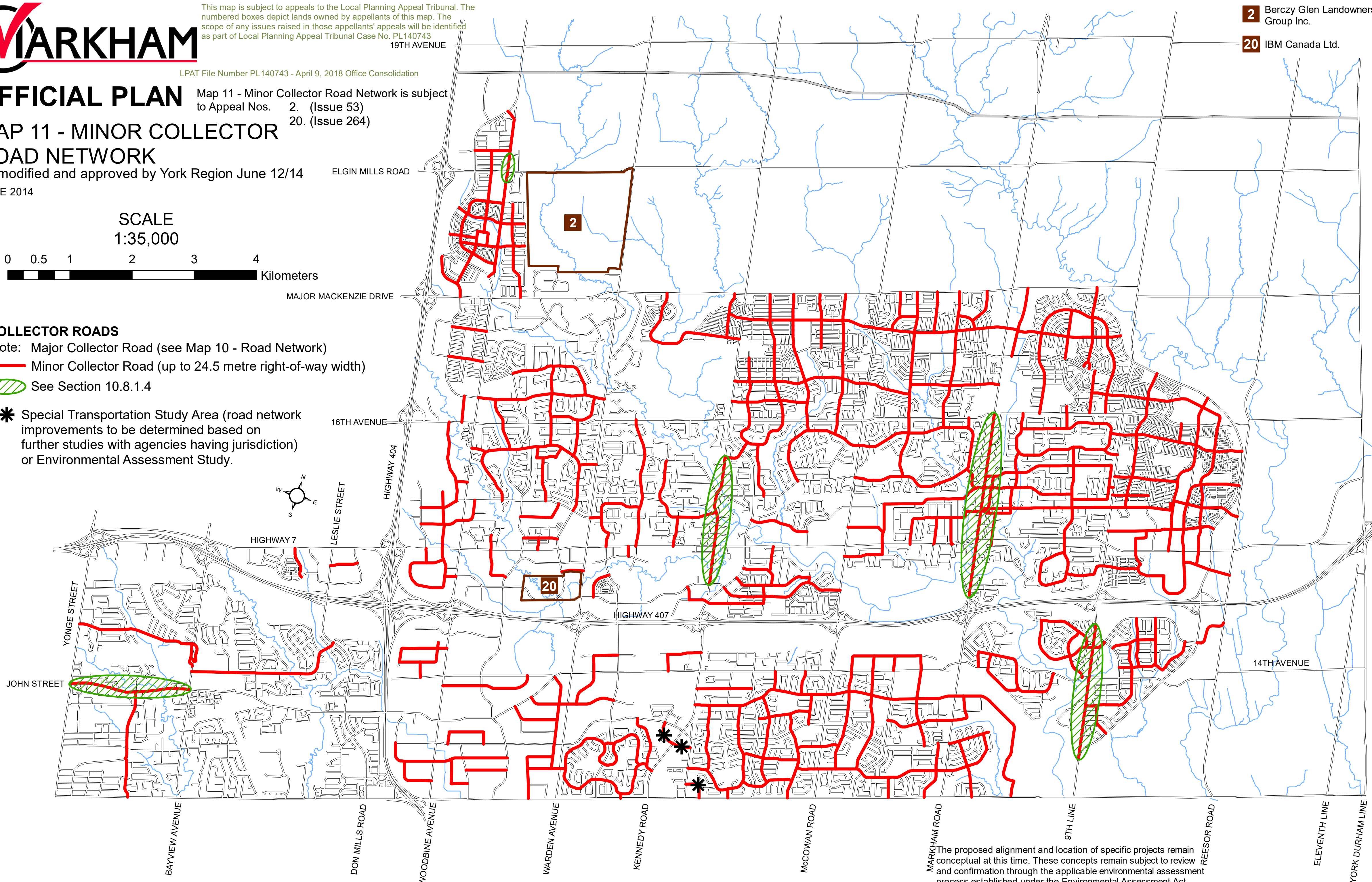
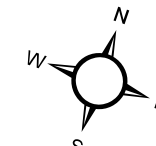
SCALE
1:35,000



COLLECTOR ROADS

- Note: Major Collector Road (see Map 10 - Road Network)
- Minor Collector Road (up to 24.5 metre right-of-way width)
- See Section 10.8.1.4

- * Special Transportation Study Area (road network improvements to be determined based on further studies with agencies having jurisdiction) or Environmental Assessment Study.



The proposed alignment and location of specific projects remain conceptual at this time. These concepts remain subject to review and confirmation through the applicable environmental assessment process established under the Environmental Assessment Act.