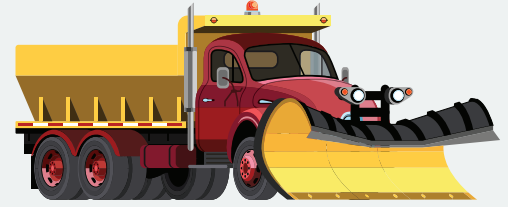


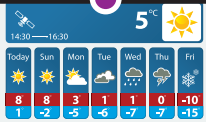
2023-2024

WINTER MAINTENANCE NEWSLETTER



WHAT WE DO

1. Watch weather forecast - 24/7



2. Patrol and monitor the streets - 24/7

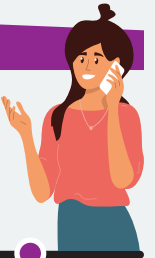
3. Anti-ice - Salt brine sprayed on primary roads and bridges (weather dependent)

5. Plow & salt the roads - Review table below for snow clearing times

4. Salt trucks - dispatched first to primary and secondary roads




6. Clear the sidewalks - City crews start when sidewalks are 5cm of snow deep

7. Continue to clear snow - Can take up to 16 hours after the snow stops falling to clear all of Markham's streets



8. Respond to service requests - Wait at least 16 hours after the snow stops falling to call the Markham Contact Centre 905.477.5530

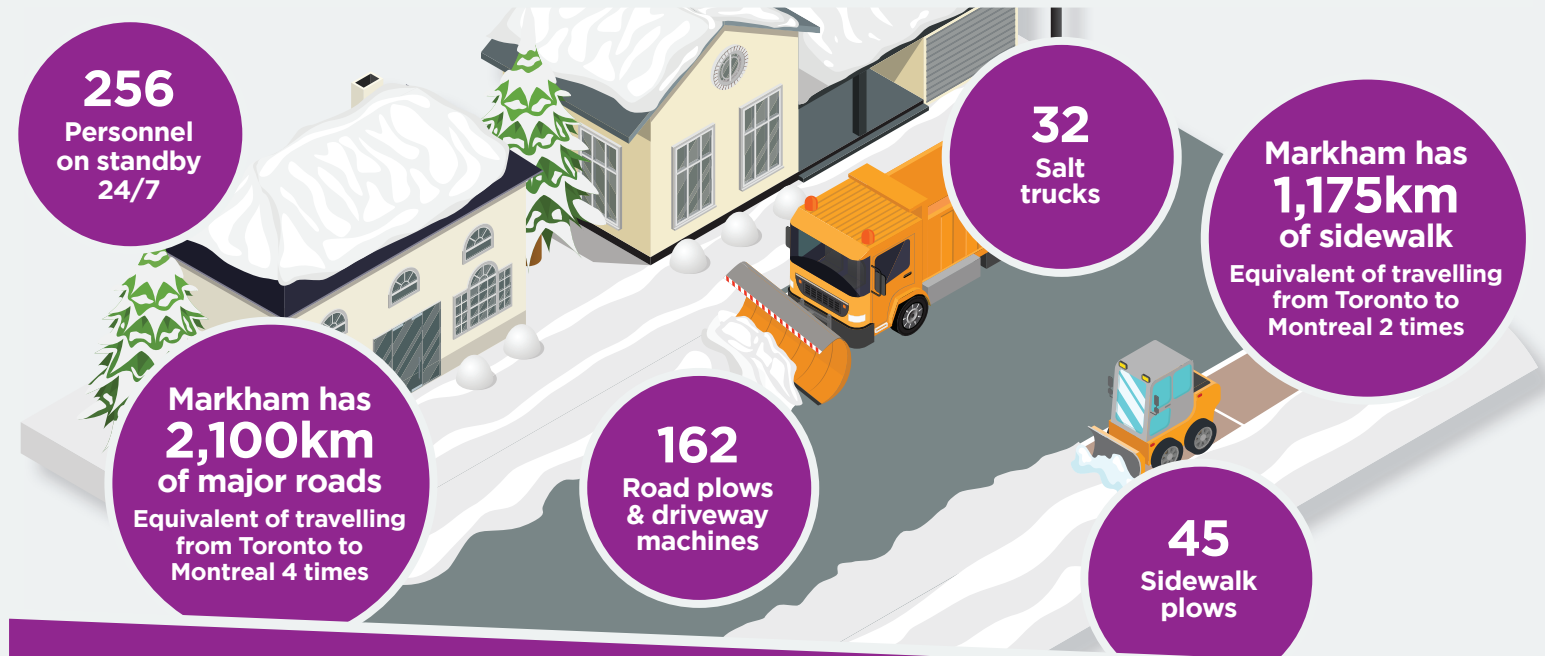
WHEN WE CLEAR SNOW

Road Type	When does the City start salting?	When does the City plow?	How much snow is that?	How many hours after the snow stops falling does it take to clear an average storm?
Primary Use Markham's Winter Maintenance App on markham.ca/winter to find out what type of road you live on.	When snowfall begins	3cm	Paper clip 	2 hours
Secondary	When snowfall begins	5cm	House key 	3 to 12 hours
Local	When road condition is deemed slippery	7.5cm at the end of snowfall	Bank card 	12 to 16 hours



Markham is proud to be environmentally friendly in salt usage.

WHAT IT TAKES TO CLEAR SNOW AND ICE



DRIVEWAY OPENINGS: “WINDROWS”



A windrow is the row of snow at the end of a driveway after snow clearing on your street.

Only residents under the Snow Windrow Removal Assistance Program will have one car width of windrow removed within 8 hours after local plow. The Snow Windrow Removal Assistance Program is designed to help persons with disabilities and elderly residents maintain road access from their driveways during the winter season.

Learn more at markham.ca/winter

DID YOU KNOW?

- Markham has a Salt Management Plan that regulates our salt usage, storage and salt transportation.
- Snow is plowed to the right and if you live on an inside corner, you will receive larger amounts of snow. Do not push snow back on the road. It is unsafe and illegal.
- Get the latest City news and emergency alerts delivered to your inbox. Sign up at markham.ca/eNews



Parking on both sides of all City streets is prohibited during snow clearing operations.

Existing parking permits and overnight exemptions held by residents are not valid during snow clearing operations.

Snow clearing begins at the start of any snowfall and continues for up to 24 hours.

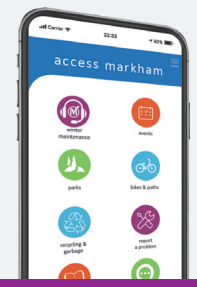
Check the status of road & sidewalk plowing in your neighbourhood! DOWNLOAD THE ACCESS MARKHAM MOBILE APP

Features:

- Recycling and garbage collection schedule with personalized notifications
- ‘What Goes Where’ search tool to help you dispose of items correctly
- Bikeways, parks and paths
- Signature and community events calendar
- Report a problem
- Your Voice Markham online engagement platform



Winter Maintenance app also available at markham.ca/winter



This newsletter is made from 100% post-consumer paper

markham.ca/winter
905.477.5530
customerservice@markham.ca

